



Rialtas
na hÉireann
Government
of Ireland

Tionscadal Éireann
Project Ireland
2040

Ár dTodhchaí
Tuaithe
Our Rural
Future



Funded by The Department of Rural
& Community Development

LEADER 2023 - 2027

Presentation to PPN

25th November 2023

Alison Keogh – Rural Development Officer

Introduction to LEADER



- The LEADER Initiative (Liaisons entre actions de developpement de l'économie rurale) was established by the European Commission in 1991 to diversify the rural economy and improve quality of life
- Co-funded by EU/EAFRD and exchequer
- Operating in Wicklow since 1992 and covers all of County Wicklow
- In excess of €20 million has been invested in 754 projects since the programme commenced.
- Projects supported have ranged in size from €2,000 to large flagship projects requiring funding of up to €500,000
- Diverse range of sectors but primarily in the areas of farm diversification, enterprise, rural tourism, heritage, town and village renewal, community facilities and amenities, renewable energy and environmental projects.

LEADER 2023 - 2027



- Wicklow Local Development Strategy (LDS) submitted to Department in July 2023 and approved on 07th November 2023
- Waiting on official start date and Operating Rules
- 2023 – 2027 LEADER Programme Themes
 - Theme 1 – Rural Economy
 - Theme 2 – Community
 - Theme 3 – Environment





County Wicklow Partnership

Rural Economy



Economic Development & Job Creation

- The Green Economy
- Agricultural Diversification
- Rural Tourism & Recreation
- Enterprise Development
- Rural Food Production
- Social, Community & Co-operative Enterprises



County Wicklow Partnership

Economic Development & Job Creation

- Total Budget committed under Economic Theme last programme - €5,088,480
- Sample Projects completed under similar theme in previous programme:
 - **Green Economy (Circular & Bio Economy)** – Roundwood Timber (Roundwood) Purchase of Woodchipper Equipment
 - **Agricultural Diversification** – Windrush Farm (Newtownmountkennedy) – Development of an Ecology & Craft Workshop Enterprise



Economic Development & Job Creation

- **Rural Tourism & Recreation** - K2 Alpacas (Newtownmountkennedy) – Holiday Cottages/ Festivals - (Tinahely Show / International Sheep Dog Trials)



Economic Development & Job Creation

- **Enterprise Development** - Pure Irish Ice (Baltinglass) – 2 Ice Packing Lines



County Wicklow Partnership

Economic Development & Job Creation

- **Rural Food Production** - Ridgeway Wagyu Beef (Donard) – Purchase of Food Production Equipment / Wild Acres (Nature Reserve Scratenagh) – Honey Bottling Equipment
- **Social, Community & Co-operative Enterprises** – Establishment of a Social Enterprise Café & Shop (Stratford on Slaney)





County Wicklow Partnership

Community





Community Infrastructure & Social Inclusion

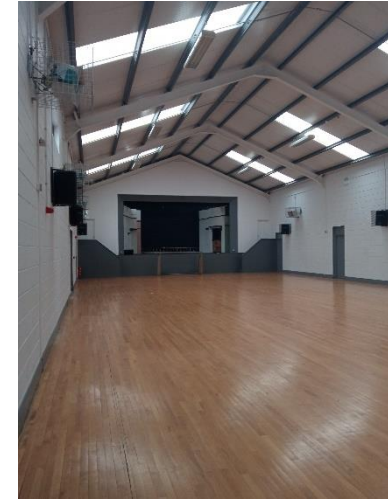
- Rural Infrastructure
- Accessible Services
- Optimising Digital Connectivity
- Rural Youth





Rural Infrastructure & Social Inclusion

- Total Budget Spent under Community Theme last programme - €1,139,516
- Sample Projects completed under similar theme in previous programme:
- **Rural Infrastructure** – Tinahely Community Hall, Annacurra Playground, Kiltegan GAA multi-use Astro





Rural Infrastructure & Social Inclusion

- Total Budget Spent under Community Theme last programme - €1,139,516
- Sample Projects completed under similar theme in previous programme:
- **Accessible Services** – Walkways surrounding pitches Knockananna & Coolkenno



Rural Infrastructure & Social Inclusion

- Total Budget Spent under Community Theme last programme - €1,139,516
- Sample Projects completed under similar theme in previous programme:
- **Optimising Digital Connectivity** – SMART villages training
- **Rural Youth** – CWP Social Enterprise Training & Gone Past Talking (Youth Mental Health Initiative)





County Wicklow Partnership

Environment



Environment

- Sustainable Development and Climate change Mitigation and Adaptation
 - Sustainable Development of Rural Environment
 - Climate Change Capacity Building
 - Climate change Mitigation



County Wicklow Partnership

Environment

Total Budget committed under Environment theme last programme - €821,590

Examples of projects previously funded under similar theme:

- **Sustainable Development of Rural Environment**
 - Community Gardens and Community Planting,
 - Red Kite Project



Environment

Total Budget committed under Environment theme last programme - €821,590

Examples of projects previously funded under similar theme:

- **Climate Change Capacity Building**

- Biodiversity, Citizen Science & Climate Action Awareness Raising Training Projects; Studies to support environmental planning in communities



- **Climate change Mitigation**

- Native Oyster Reef Restoration; Enterprises in Biomass Production



What LEADER can fund

- Capital Investment Operations
 - Capital building or renovation works
 - Machinery and equipment
 - Computer software and acquisition of patents, licenses, copyrights, trademarks.
 - Marketing and promotional costs associated with a specific project.
 - Hire of equipment



What LEADER can fund

- Analysis and Development
 - Feasibility studies
 - Development plans
 - Resource audits
 - Development of prototype products and services
- Training Courses
 - Not part of mainstream education or formally accredited



What LEADER cannot fund

- Agriculture
- Fisheries
- Forestry
- Conventional retail operations, excluding community based shops and farm shops selling locally produced produce
- Mainstream education or training
- Loans
- Working capital
- Operational Costs of Project Promoters – salary/overheads etc.
- Insurance
- Horticulture
- Payments for gifts, donations or personal entertainments;
- Statutory fines and penalties, criminal fines and damages;
- Legal expenses in respect of litigation
- Costs associated with meeting a legislative or statutory requirement
- Planning application fee;
- Reclaimable VAT
- Improvements/refurbishment of private residential property
- Projects that already have other EU funding either directly or through a national programme
- Conventional motor vehicles, including cars, industrial/farm/construction vehicles, trailer to transport such vehicles, vans and buses
- General maintenance works of public bodies
- Childcare
- Health Care & Health Care equipment; - unless in exceptional cases where approved by the Department
- Nursing homes
- Housing
- Race and sport horse industries*; (with the exception of ancillary activities for the provision of services to those industries)
- Greyhound Industry



Next Steps

- Awaiting programme start date and operating rules
- Launch of the new LEADER programme 2023-2027
- Call for applications
- Speak to a CWP LEADER Development Officer to discuss your ideas and to best prepare for a LEADER Application

info@wicklowpartnership.ie

0402 20955

www.wicklowpartnership.ie



LEADER Development Officers



Siobhan Mehigan
Enterprise, Food
and Environment



Alison Keogh
Tourism &
Community



Evelyn Murray
Social
Enterprise, Craft
and Events



Q&A