

What we Heard

Environment Focused 'Let's Develop our Vision for our Community' Consultation

Saturday 28th May in Wicklow Aquanauts Clubhouse, Greystones

Albert presented on Wicklow Aquanauts Group and spoke about the many interesting finds - <http://wicklowaquanauts.com/>

Ann McAvoy presented to the group about the local marine environment and the work research work being undertaken by Wicklow Aquanauts.

Need to protect Marine Environment

***Judy Osbourne** spoke with the group about the importance of the Environmental voice being reflected in the new LECP. Judy's presentation formed the framework for this consultation session.*

**County Development Plan – spatial strategy – what and where Building
LECP – How County going to spend time & money. Very important plan.**

Judy highlighted the role Wicklow County Council play to support people to 'Do'.

Judy to share Government guidelines on the LECP with group.

Link High Level Goals to SDGs. Value of SDGs to proof Plan. Map everything to the UN SDGs -
Make sure that the SDGs are clearly attached to the LECP objectives

Could the LECP Vision speak to Resilient Communities and climate and biodiversity? As it needs to be
an integral part of all High Level Goals

Only things that get done are what we do.

Need to move from the I to the We

WE NEED RESILIENT COMMUNITIES – every community is disadvantaged

Participation Democracy and Good Governance

Community should OWN the plan

Issue of land development

Training in consensus building for Town Teams

Need more approaches to the provision of housing

Need joined up action – not siloed thinking and action – Establish relationships and trust. This collaboration between PPN & WCC a major positive development.

Issue of limited resources within the Council in terms of both staff and finance. County a large area to cover

WCC trying to be all things to all people – can't all work issue of sustainability.

Active Participation: PPN, Older People Network, Comhairle na nOg

If local community took up projects WCC Engineer could possibly help/support

Establish Countywide 'Land Trust' for the development of sustainable development and community use - LDA mapping this. - Establish a county wide community land trust for housing & agriculture

Housing – Community led housing

Establish a Park Dept or Parks Officer position in Wicklow County Council - Every planning application to go through the Parks Dept (as in Dun Laoghaire) - Need a parks officer – all planning should go through them

Check back on ideas raised in relation to consultation on County Development Plan - don't lose them

Ability to set agendas of SPCs

Public developments including housing – to stay in Public ownership

1% levy on building new estates for Community building eg. Neighbourhood network

Prioritize the goals of plan

Ability to set agendas of Strategic Policy Committees

Ensure environment/climate/biodiversity is include across all policies

Question around Measurability , monitoring and analysis.

Issue of Capacity within Wicklow Co. Co.

Wicklow Planning Alliance – asking about indicators will be used to monitor the Plan? – consider measuring criteria/monitoring

WCC have done an analysis of ECP – not shared yet?

Stakeholder Review

Actions must be examined to show that they have a beneficial equity

Public money has to stay within the public realm for public benefit

Don't lose submissions that were not approved for the Co Development Plan

Who will write the LECP? – who is on the advisory committee, Environmental Representation on the committee. Who could this rep be – could it be the chair of the CABA SPC.

How to make a useful contribution.

More opportunities for collaboration

Provide resources for more engagement

The public should own the policy/plan

Joined up policy development

Establish relationships & trust

Need more communication & better communication – time to consider – time to respond

Need to have clear KPIs

Need relevant expertise within the local authority

Need a stakeholder review of the local authority

Need to implement our protective laws & legislation

Plans and legislation to protect marine wildlife and their habitats.

More local and national information on what is actually being done to preserve our living marine heritage and how this is being monitored.

Include people in development

Linked up thinking, resilient, sea, act before it happens

Values, Culture & Meaning

Get kids early – ‘Three for the sea’ initiative.

Education – make engaging.

Issues with making a complaint to Wicklow Co. Co.

Training for Wicklow County Council staff on Climate issues

Need to keep some core values in mind: Social Justice, Sustainable Dev, Social Inclusion, Human Rights, Equality & Diversity, Empowering Communities, Active Participation etc.

Need to keep learning

Important to maintain our values/integration

Need to balance development with affordability - crisis if people cant afford to live

Social and Community Development

Develop community capacity to engage

Need to get people working together – we need to work together to achieve.

Promote volunteerism

Autonomous team to set up allotments in estates, use green areas in housing estates to establish allotments - Set up an autonomous team for allotments /kitchen gardens in the county – to work with residents' associations etc

More opportunities for collaboration

Need to balance development with affordability - crisis if people cant afford to live

Establish communal composting

build Resilient Community

Establish Countywide 'Land Trust' for the development of sustainable development and community use - LDA mapping this.

Housing – Community lead housing - Community led housing (co-housing)

Support for River Trust

Public Realm and street scapes - Work of public realm & street scapes

Support for SMART Village Programme - Support to smart village programme

More Public Parks and playgrounds for all – (eg. Paul Hogarth Company)

Play through nature playgrounds with trees

Support allotments

1% levy on building new estates for Community building eg. Neighbourhood network

Fund/support facilitating bodies eg. Wicklow Planning Alliance

SMART villages support Green

Wildlife/green corridors connecting everything – estates, towns villages

Support for communities to buy land adjacent to towns & villages for biodiversity projects

More parks

Support Citizen Scientist & Other Volunteers – Wicklow Volunteer Centre will show how

Establish a network of green networks

More encouragement for estates to grow trees – hold a tree festival

More social & affordable housing – housing associations

Ukrainian eco-villages are networking with other eco-villages to support each other

3 from the sea initiatives

Need more educational/protective initiatives

Need to mix creative with protection

More ecological teaching in schools. There is a little in 5th class and a small section for junior cert in science .

Advertise need to protect the environment posters in schools & public places

Housing for disabled people/kerbs/road crossing etc

Part of society can't use internet

Environment and Sustainability

Prioritise climate & biodiversity in the LECP

Build Resilient Communities

Eco villages eg Ukraine

Need more approaches to the provision of housing

Transport issues also to be addressed

Biodiversity needs to be all over the Plan

One overarching goal needed about Climate, Biodiversity & Community – need to address before we can do anything else.

Support the 'Mountains to Sea' project

Diversified agrarian communities

Autonomous team to set up allotments in estates, use green areas in housing estates to establish allotments

Establish communal composting

If local community took up projects WCC Engineer could possibly help/support

Sustainable, Accessible Transport

Hemp – non THC version - Useful product – being developed as a building material (quality insulation value, carbon sink, easy to grow). Need Government investment in research - Need to ensure it does not become a mono-culture - (Hemp Federation of Ireland)

Pocket Forests – closer planting - Council to facilitate - Council to identify areas and support communities. Actions around pocket forests

Establish a Park Dept or Parks Officer position in Wicklow County Council - Every planning application to go through the Parks Dept (as in Dun Laoghaire)

Urban Trees – plant more. To cool environment as we experience rising temperatures - Tree planning needs to be planned

Issued of ESB not properly pruning back trees from supply lines. Now just rough cutting a V in the trees or just cutting down - ESB should care for/maintain trees when doing their work

Ensure we have B-line corridors for Biodiversity

Support for River Trust - Support River Trusts - Protect Rivers

Protection of Dark Skies

Improve quality of sea

Rewild Wicklow – support

Storm water and urban drainage system – rain gardens and rain beds - Storm water urban drainage systems - SUDS – stormwater urban drainage systems

(European funding will look for Green and SMART initiatives/projects)

Play through nature playgrounds with trees

Support allotments

SMART villages support Green

Marine environment

High level goals Objectives & actions highlighting biodiversity & climate action

Wildlife/green corridors connecting everything – estates, towns villages

Actions around public lighting - less lighting – smarter = less light spill – more biodiversity friendly

Biodiversity net gain/Biodiversity positive approach to all developments/actions

Resilient communities – biodiversity net gain-much better society for us all

LILAC – low impact living

Support rewilding Wicklow

PROTECT THE MARINE

TRANSPORT!

More social & affordable housing – housing associations

All local authority staff should have CPD training on the environment

[Preservation order needed in Greystones harbour](#)

[The only problem with the environment is we all expect someone else to do something about it](#)

Need marine protected areas

Stop dredging

Need more information & research on freshwater lakes to enable monitoring of water environment

STOP DUMPING IN OUR SEAS

Ban Round Up and other glyphosate pesticides for everyone. They are lethal and dangerous to wildlife, the environment and people.

Encouragement to grow more fruit and veg in Ireland. eg potatoes in Supervalu all from France? Tomatoes, apples, onions etc also widely imported. Benefit, more jobs, healthier, fresher, cheaper food. Fuel saved as these items will not need to be imported from other countries.

Monitor wildlife in sea and rivers that run into it

Litter bins/chemical spills

Biodiversity in sea – protect for future generations – Perpetuity legacy/tourism

Remember the marine environment (also provides food for the future)

Economy & Resources

Need to find our USP & play to our strengths

Small businesses need supports – not always regular income

Encourage Social Enterprise

University hub in Wicklow – clustering of development and economic development around universities.

Decent employment

High value added jobs

Ensure business is circular and carbon neutral

Need to be able to live in area where work is available – availability and affordability

Transport issues also to be addressed

Local Development Trust for business development – to support set up of business enterprise.

Affordable space for small businesses - Need to have financial control do they stay affordable - Local business development hub that is affordable in perpetuity – financial controls to stay affordable

(South England – key worker crisis – Community Land Trust. Land Bank state owned land – used for housing association development

Supports for small businesses and self-employment

Economic Pressure – charge businesses extra based on the number of Zero hours contracts it has on its books. - This could need to be undertaken on a National level.

Sustainable, Accessible Transport

Hemp – non THC version - Useful product – being developed as a building material (quality insulation value, carbon sink, easy to grow). Need Government investment in research - Need to ensure it does not become a mono-culture - (Hemp Federation of Ireland) - Plant hemp – easy to grow – being used as insulating & building product – see hemp federation Ireland

Establish a county wide community land trust for housing & agriculture

Agri business maybe big in new LECP

Employment Plan with University Hub in Wicklow

Actions around public lighting - less lighting – smarter = less light spill – more biodiversity friendly

Quality seafront experience

Put economic pressure on business who implement zero hours contracts

TRANSPORT!

Need to ensure businesses are adopting sustainable practises

High value added jobs – decent wage/income

More public toilets & seating for older people

Health (Physical & Mental)

More public parks/green spaces for biodiversity, recreation, wellbeing

Healthy Environment = Healthy Humans

Housing for disabled people/kerbs/road crossing etc

Sea also used as recreation, healthy place to be. Access to public harbours

More public toilets & seating for older people

Keith Scanlon

I have attended 4 or 5 meetings on LECP and numerous meetings on Wicklow Wellbeing in recent times.

Previously I have also (on behalf of the Community = youth and families) drafted the Wicklow Climate & Biodiversity Emergency declaration and first Mobilization and Action Plan to tackle it, and the Irish National Climate and Biodiversity declaration and the call for the Citizens' Assembly on Biodiversity Loss (finally underway). Thank you for joining the Community on all of that. None of us could have done it alone. And I am claiming no special credit, only as a secretary / facilitator.

Now as you review the LECP, I would like to share my view (listening to the community and trying to facilitate and capture it in a simple draft) of how the Wicklow Wellbeing Plan and the Wicklow LECP could best be structured to develop our Economy, Community and Ecosystem and again show leadership. I have not yet put this draft directly to the Wicklow Community and got their mandate, so I am not yet speaking for the community here (I have again just listened and drafted what I hear them to be saying, please test it with me and we can change and improve it together):

Principles: Growth is good; A rising tide lifts all boats; Development must be Sustainable and Locally Grounded and Owned; Transition must be Just and Leave no One Behind; We declared Climate & Biodiversity Emergency and that changes everything; Active Citizenship and Resilience at all levels is the new Wellbeing (and the new democracy).

Baseline:

The WW LECP was a fine step forward at the time and of its time (guiding principle: A rising Economic tide lifts all boats*),

The WW PPN Wellbeing was even a step more developed and balanced at its time (A rising Community tide lifts all boats).

The UN SDGs (brokered by an Irishman naturally) was a step further (A rising tide of partnership for Sustainable Development lifts all boats).

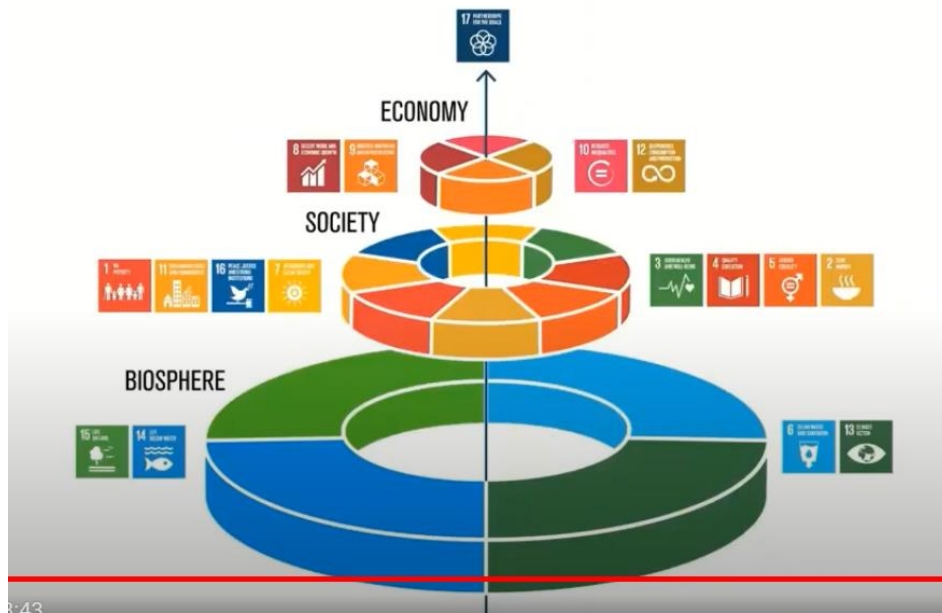
Then we declared the Climate & Biodiversity Emergency so we had to re-examine the balance and tune it slightly.

And we all realised (but didn't officially declare) the Housing Emergency - actually the Homes Emergency (the house is just the corporate sales unit of that).

The Coalition2030 & IEN presentation of the UN SDGs++ (A rising Ecosystem for Resilient, Local, Sustainable Development lifts all boats and leaves no one behind).

There can be further improvements in future but that's where we are up to now. Here is the picture and the videos below talk it through.

Thank you for your attention



Target:

The main question is I think - What Structure & Goals are needed for the WW Community Wellbeing and WW LECP ?

Just those 3 concentric circles (from the bottom up)

1. Build a **Resilient WW Ecosystem** (or call it Biosphere or Environment or Climate & Biodiversity as you prefer)
2. Build a **Resilient WW Society** (or Community)
3. Build a **Resilient WW Economy**

How - what objectives, actions and measures?

Have a look at the SDGs and the SJI SDG framework for Local Authorities for a start.

Can we really get there all in 1 step now? Is that really realistic, since we have invested all that work previously in the previous frameworks and they might be grand?

Yes, we must get there all in 1 step now.

That previous work is not wasted or redundant, use it in the new structure.

But is it really realistic that we can get there now in 1 step?

With respect, that is not the right question to ask in an emergency. Managing back risk and expectation is for peacetime. This has to be a moonshot response. Yes, there is huge risk in being ambitious. And huge-er risk to try to be more realistic. The better question is will we do everything possible, come what may, in order to survive (and have some chance to thrive and have some wellness / richness of life)? The answer is Yes we must. The Community must insist and do insist. To continue walking off the cliff in a more realistic fashion is not an option, not socially acceptable. That option must be vigorously boycotted even.

But isn't that a niche environmental view? Aren't there lots of stakeholders (businesses and farmers and lower working class and others) that would have different views and need lots of effort to be convinced?

No, I do not believe so. There were previously but we are past that now.

The UN SDGs, the Climate & Biodiversity Strikes and the SDG++ (above) have majority support and engagement.

There is still a communications gap (WCC communications is poor in my view, the weakest part of the Council of the Year, but the other partners can help). And there is a gap on the details of just transition / leave no one behind. But this is an emergency and we have a mandate to mobilize to fix it and communicate thoroughly as we go (like we did for COVID-19).

Is that all you want us to consider Keith? Are you sure you don't need anything else?

Well now that you say it, it would be nice visible display of leadership ambition to change the name of the WW LECP to the WW LECEP (Local Economic, Community & Ecosystem Plan) if it's not too much trouble please? I think that you do have the authority if you choose to.