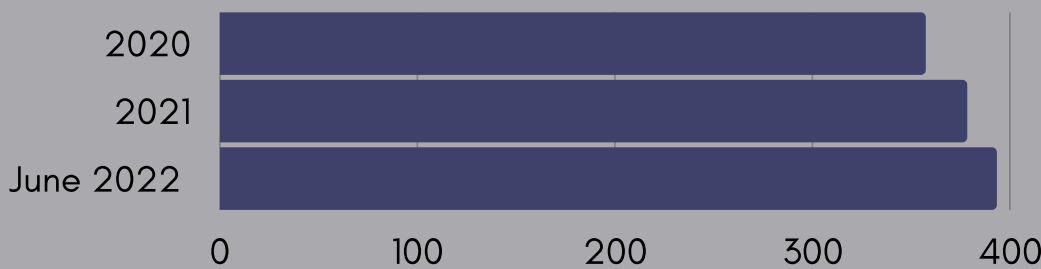


2022 Mid-Year Report

County Wicklow

Full 2022 Mid-Year Report
available on [PPN website](#)

GROUP MEMBERSHIP



List of member groups available on [PPN website](#)

Resources developed to support Associate Member Groups to become Full Members of the PPN

NETWORKING: LOCALLY

Networked on Locally Convened Committees:

Wicklow Disability & Inclusion Steering Committee

Wicklow Community Response Forum

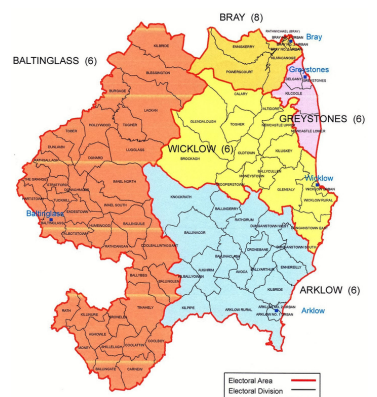
Bray & North Wicklow Ukrainian Refugee Response Committee

West Wicklow Community Response Local Area Team

Networked with & supported networking of local organisations & member groups.

Held Peer Support & Networking session for Groups responsible for the running of community facilities.

Organising Community Climate Conversation.



Circulated Agendas for Municipal District
Monthly Meetings
Presented to WCC Elected Reps on
collaboration of PPN with WCC

Collaborated with and assisted projects by:

County Wicklow Partnership
Womens' Social Inclusion Network
- International Womens Day Event

Comhairle na nÓg - Youth
Conference

Wicklow County Council Arts
Office - Creative Place Making
Application



Local Economic & Community Plan

Worked collaboratively with Wicklow County
Council on public consultations

Secured funding to extend the consultation
into hard to reach communities

Over 320 Voices Heard to date

Supported
other PPNs:
with staff
recruitment &
hosting
arrangements



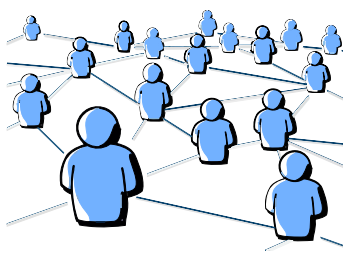
NETWORKING: NATIONALLY

Represented on:

PPN National Advisory Group
National Secretariat Network
National Resource Worker Network

Contributed to:

Annual Report Sub-Group
Review Oversight Committee
National Disability Authority Focus Group
National PPN Network Insurance session



Webinar presentations:

Roscommon Env. Network & Coalition
2030 webinars on the LECP.

Worked Collaboratively to make an application to

Community Climate Action Programme:
Climate Education, Capacity Building and
Learning by Doing (Strand 2 Funding)

Decision on proposal imminent

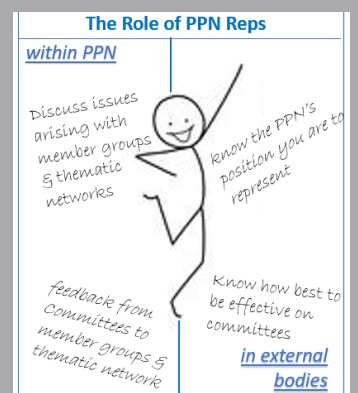
COMMITTEES & PPN REPRESENTATIVES



7 New PPN Reps
nominated/elected.

Induction & Information
Sharing & support
meetings held.

40 PPN Representatives
sat across 18
committees & boards



Rep Reports
available to view
on [PPN Website](#)

CONSULTATIONS

On the County Local Economic & Community Plan & PPN Vision for Community Wellbeing through: an Online Survey, Written Submissions, Attendance at collaborative events (detailed above), In person consultation session in each of the 5 Municipal Districts, an Online consultation session and Environmental focused consultation session.

In total over 320 voices have been heard in this consultation to June 2022.

Additional voices will be heard through the pilot project that will encourage hard to reach groups to engage with the consultation process.

SUBMISSIONS

Submission made to the draft Wicklow County Council Customer Service Strategy using information received during the recent LECP/VCW consultations.



2022 Mid-Year Report



Full 2022 Mid-Year Report
available on [PPN website](#)

TRAINING & CAPACITY BUILDING

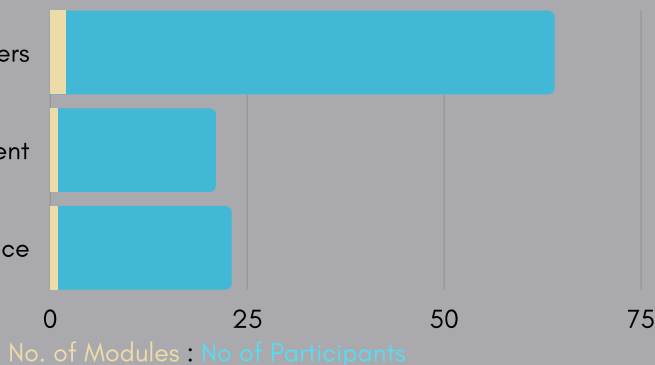
Staff attended training on:
UN Convention on the rights of persons with disability.
Dept Community Climate Conversation Format.
Salesforce administration and on using zoom.



Meet the Funders

Risk Management

Insurance



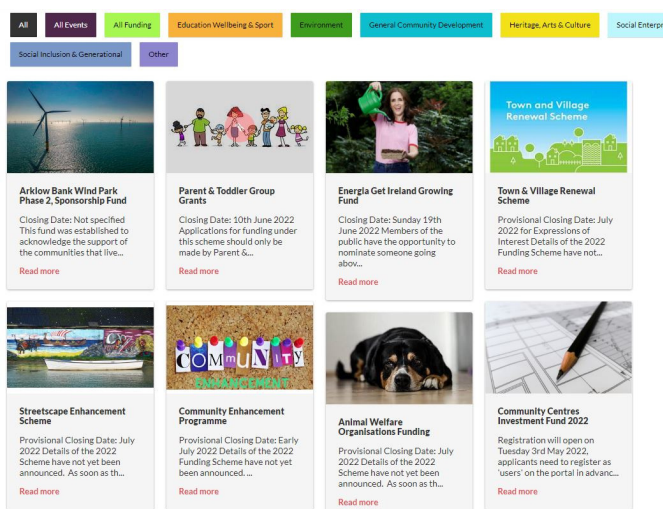
Training Opportunities highlighted on social media, website and in Members updates.

All training session resources available on PPN website

RESOURCES

New Funding & Events page on PPN Website

Funding Opportunities highlighted on social media, website and in PPN Members updates.



Subscribe to our YouTube Channel

County Wicklow PPN

COMMUNICATIONS & OUTREACH

18 Member Update Ebulletins sent

Facebook: "likes" up by 49 to 1785 & followers up by 98 up to 2200

7 Newspaper Articles

Attended, Contributed to and Engaged with a host of local and national organisations and events



Follow us on Facebook

PPN GOVERNANCE

Monthly Secretariat Meetings
(minutes available on [website](#))

2 Liaison Subgroup Meetings

Policy Subgroup: reviewed 2 policies

Regular Staff Supervision & Staff Appraisal

Monthly Work and Finance Reports Prepared



Developed & Maintained Resources for Member Groups & PPN Reps

Supported PPN Reps in role on Committees

Highlighted Vision for Community Wellbeing & SDGs

VISITS TO COMMUNITY PROJECTS

Baltinglass

Arklow

RNLI



Tearmann Community Garden



Lords Neighbourhood



Howard Mausoleum Pyramid



CO. WICKLOW PPN CONTACT INFO:

Website: www.countywicklowppn.ie

Email: info@countywicklowppn.ie

Phone: Helen: 087 1895145
Grainne: 086 0487434

Address: c/o CEART, Crinion Park,
Wicklow Town, Co Wicklow

