

# *Wicklow Public Participation Network*

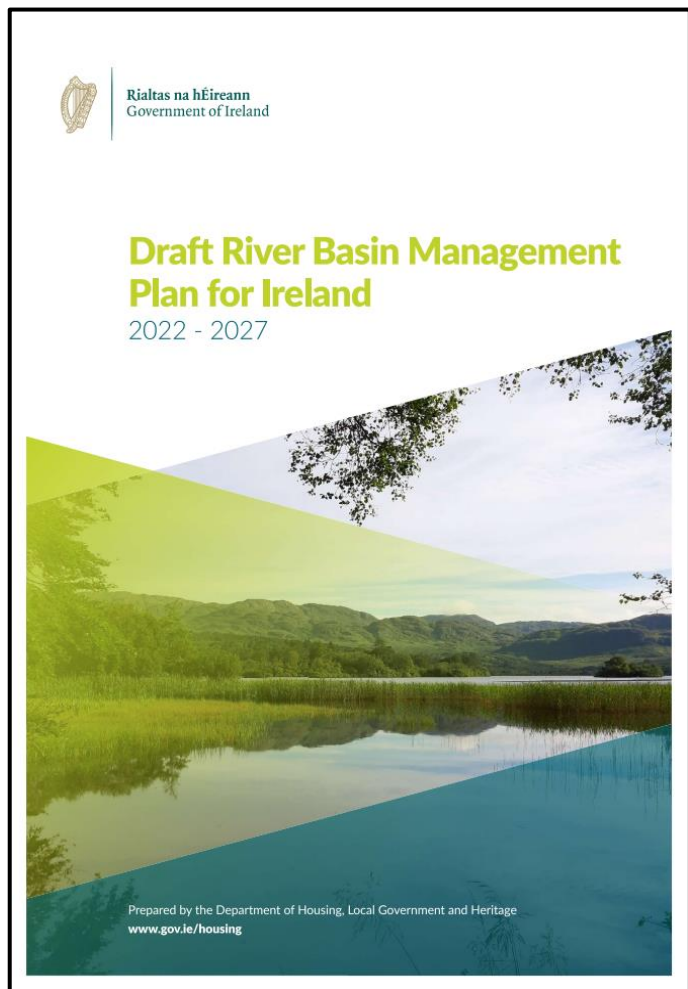
## **Draft River Basin Management Plan for Ireland (2022 – 2027)**

*Monday 29th November 2021, 7pm - 8pm*



Avonmore River, Rathdrum

# Meeting Format



- 30 minutes presentations
- 30 minutes discussion/ Q&A

**Hosted by:**

**Dónal O'Keeffe, Community Water Officer**

**Anna Rymszewicz, Catchment Scientist**



# What this meeting is about

Water Heritage Event 2021, Knockree



- Importance of good water quality in Co. Wicklow
- Overview of Draft River Basin Management Plan
- Work to date for protecting and restoring our rivers and lakes
- Water quality, both nationally and in Co. Wicklow
- Open discussion on local water quality challenges

# What this meeting is not about



Finger Pointing Gets Blame, Not Results!

...



# The importance of good water quality



- Health and wellbeing : physical, mental, spiritual
- Jobs in the local economy
- Safe future for you, your family, your community
- Nature and a healthy environment
- Sense of place and connection with your local area



# Community Action & Projects



Water Heritage Event 2021



Ballyduff River



# Community Action & Projects





# Draft River Basin Management Plan for Ireland 2022 – 2027

A national plan that aims to protect and restore good water quality in our rivers, lakes, estuaries, groundwater, and coastal waters.

For the benefit health, biodiversity, climate, and communities.





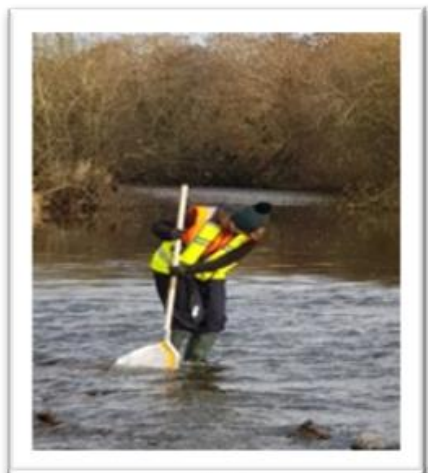
# EU Water Framework Directive

- Achieve at least good water quality in all waters by 2027.
- State agencies, local authorities and public bodies working together
- Involvement of water users and the public
  - *giving a voice to communities!*
- River Basin Management Plans, in three cycles:
  - ~~1<sup>st</sup> Cycle 2009-2015~~
  - 2<sup>nd</sup> Cycle 2018-2021
  - **3<sup>rd</sup> Cycle 2022-2027**





# Progress in the 2<sup>nd</sup> Cycle (since 2018)



- LAWPRO Catchment Science Team
- An Fóram Uisce/ The Water Forum
- Agricultural Sustainability Support Advice Programme (ASSAP)
- Blue Dot Programme for High Status waterbodies
- Increased funding and through CWDF
- Regional Management and Operational Committees
- Collaboration with LEADER, EIPs, Interreg, LIFE Funding



**Nationwide - 650 Community groups engaged with LAWPRO**



# Collaboration between public bodies



**Joined-up thinking**



# Catchment Science

*Anna Rymszewicz*

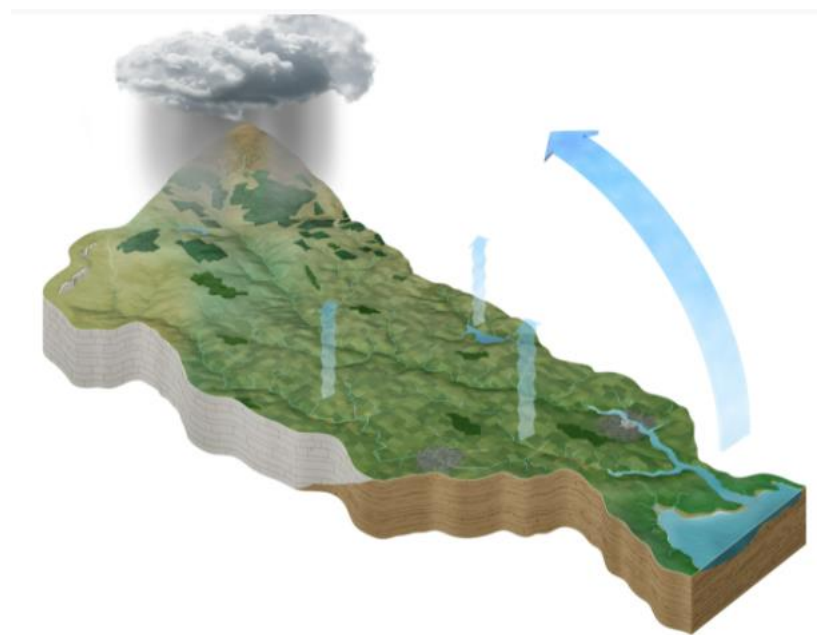




# What is a Catchment?

‘A catchment is an area of the landscape that catches and collects rainfall and allows it to flow through rivers, lakes and groundwater to the sea.’

‘The health of water within that catchment reflect both the natural attributes and the human activities within that area.’



See [www.lawaters.ie/our-catchment-work/](http://www.lawaters.ie/our-catchment-work/) for a short animation explaining the water catchment

# What do we mean by water quality ?

## *European Union Water Framework Directive*

High

Good

Moderate

Poor

Bad



The Biological Indicators (INV)

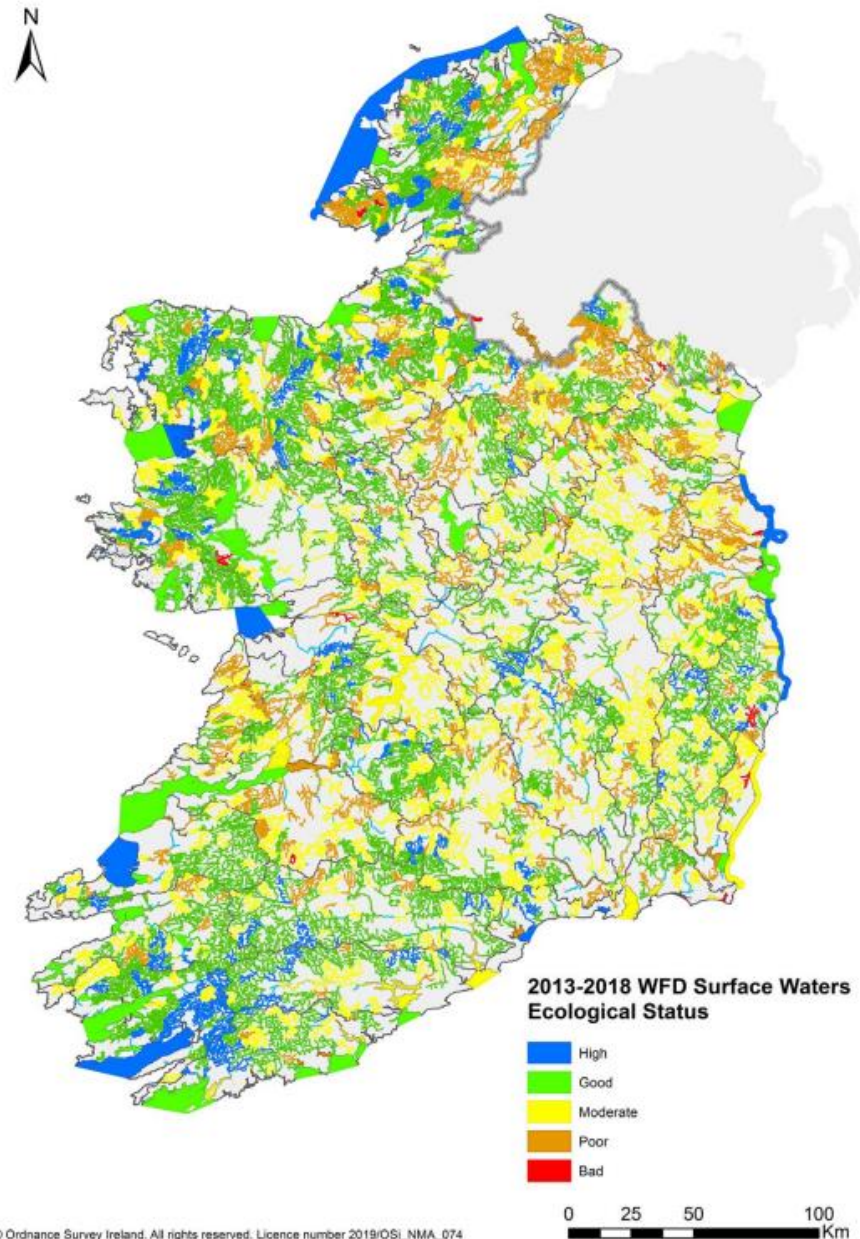




# Surface waters and Ecological status

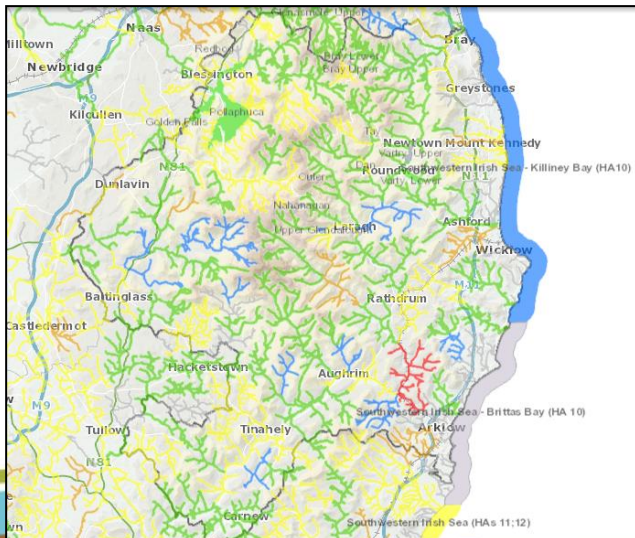
- 53% of surface waters are in Good or High status
- 47% are in unsatisfactory ecological status

Figure 9. Surface Water Bodies and their Ecological Status



# Water Quality in Wicklow

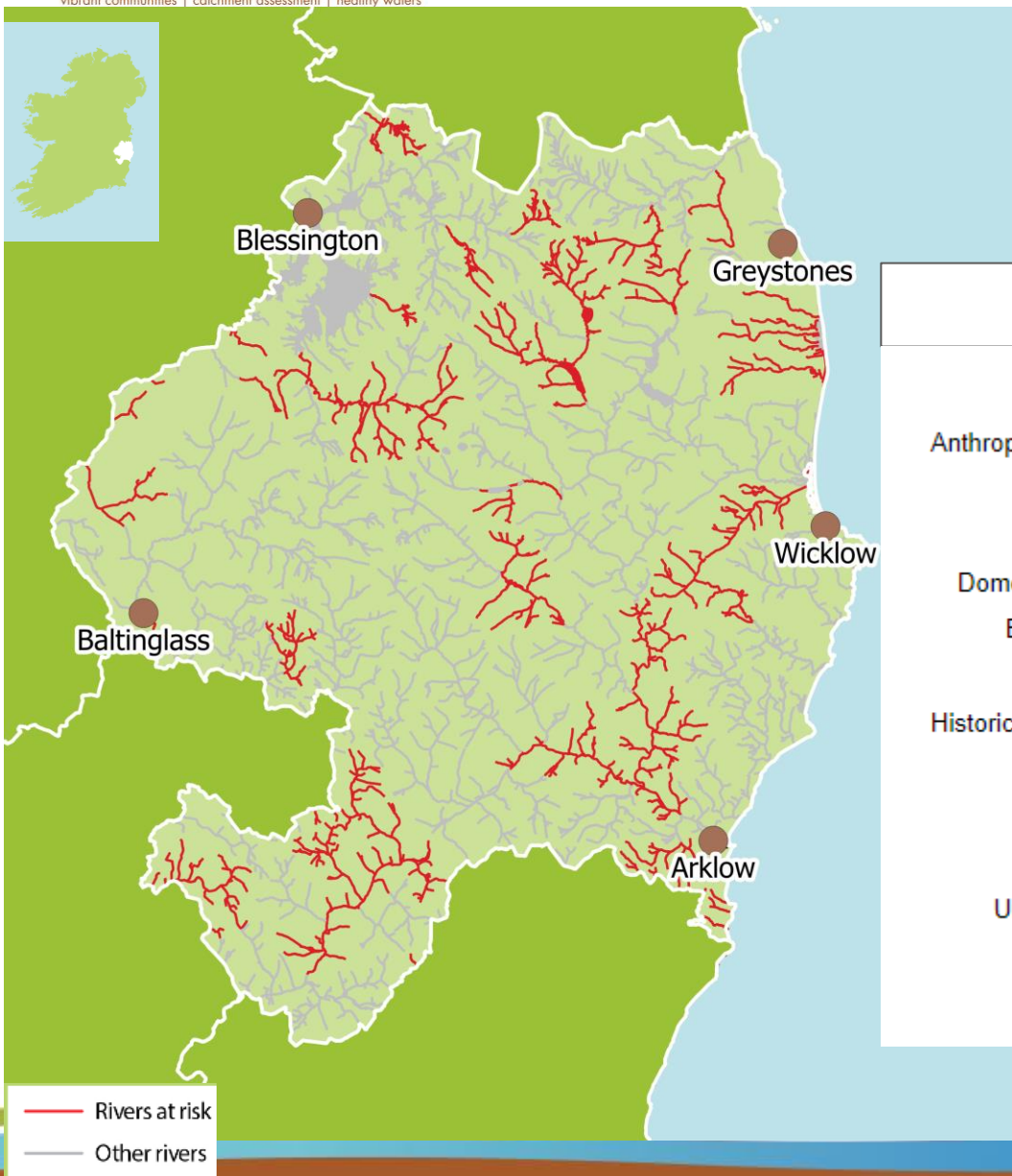
Period	High	Good	Moderate	Poor	Bad
SW 2007-2009	15%	45%	37%	3%	1%
SW 2010-2012	9%	52%	31%	6%	1%
SW 2010-2015	7%	48%	36%	8%	1%
SW 2013-2018	12%	52%	29%	5%	2%
<b>National 2013 – 2018</b>	<b>8%</b>	<b>45%</b>	<b>28%</b>	<b>18%</b>	<b>1%</b>



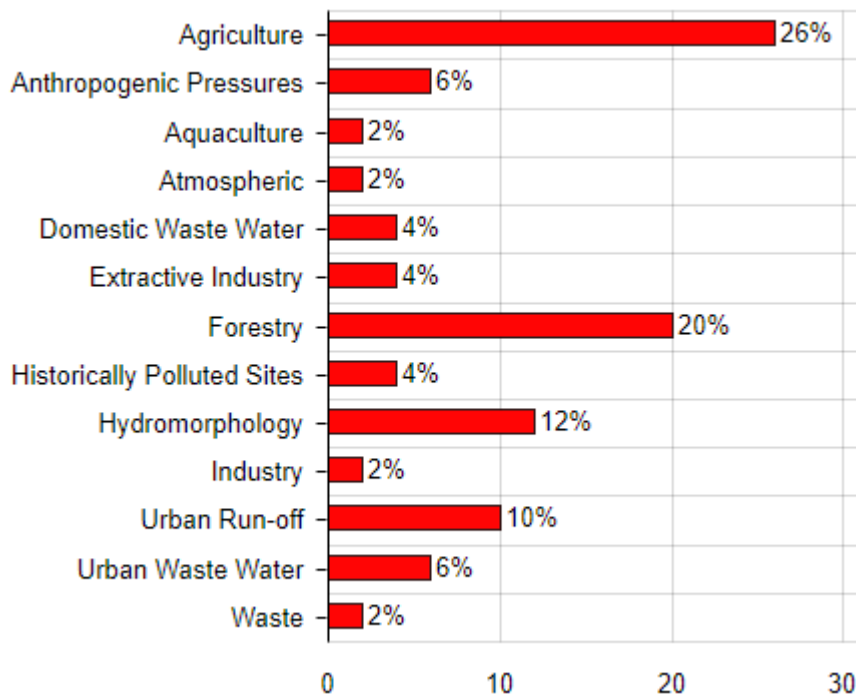
Source of information [www.catchments.ie](http://www.catchments.ie)



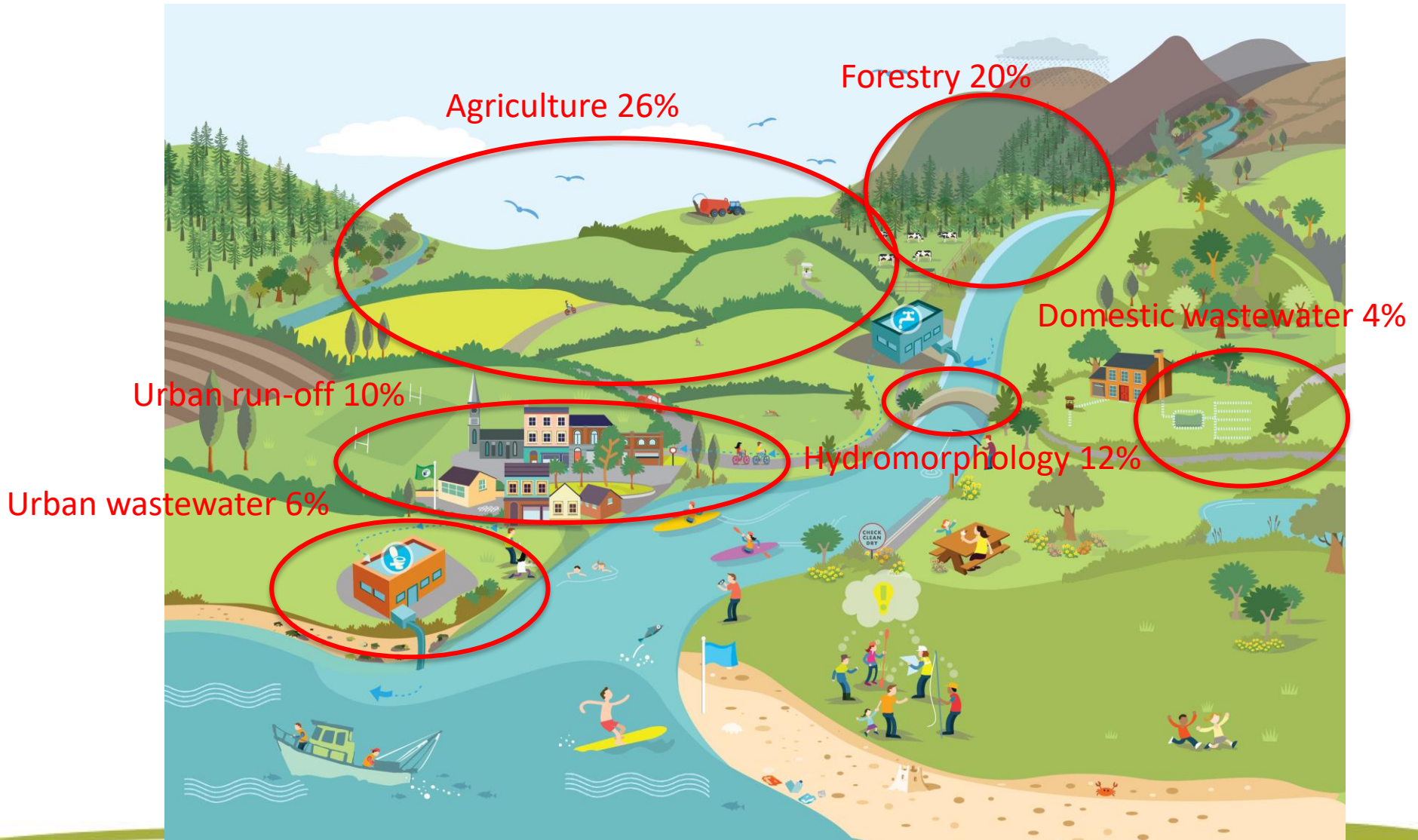
# Water Quality Problems



## Pressures on water quality

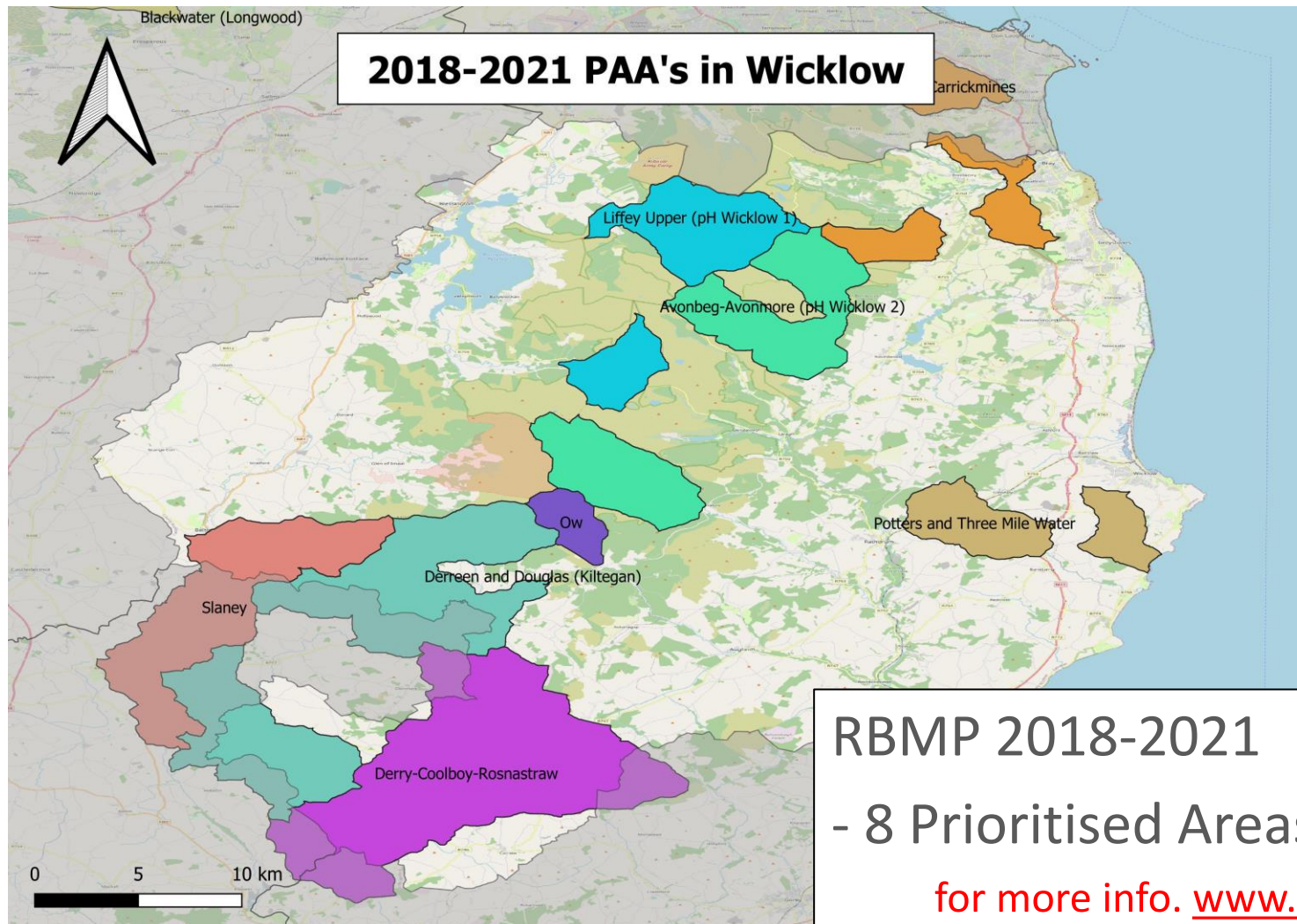


# Main Pressures on Water Quality





# Building on progress 2018-2021



**RBMP 2018-2021**

**- 8 Prioritised Areas for Action**

for more info. [www.lawaters.ie](http://www.lawaters.ie)

# Prioritised Areas for Action

## Local Catchment Assessment



## Agricultural Sustainability Support and Advice Programme





# The main themes in the plan

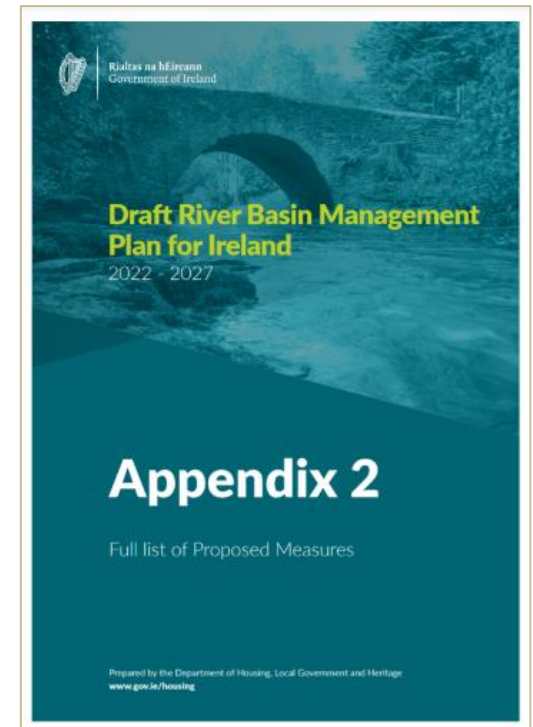
- Increased national ambition to halt the decline in water quality and reverse the damage.
- Integrated Catchment Planning – a specific plan put in place for each of the 46 river catchments in the country.
- Greater coordination and collaboration between State agencies, local authorities, and LAWPRO.
- Delivering multiple benefits for nature, air quality, climate change, and local communities.



# Measures proposed in the plan

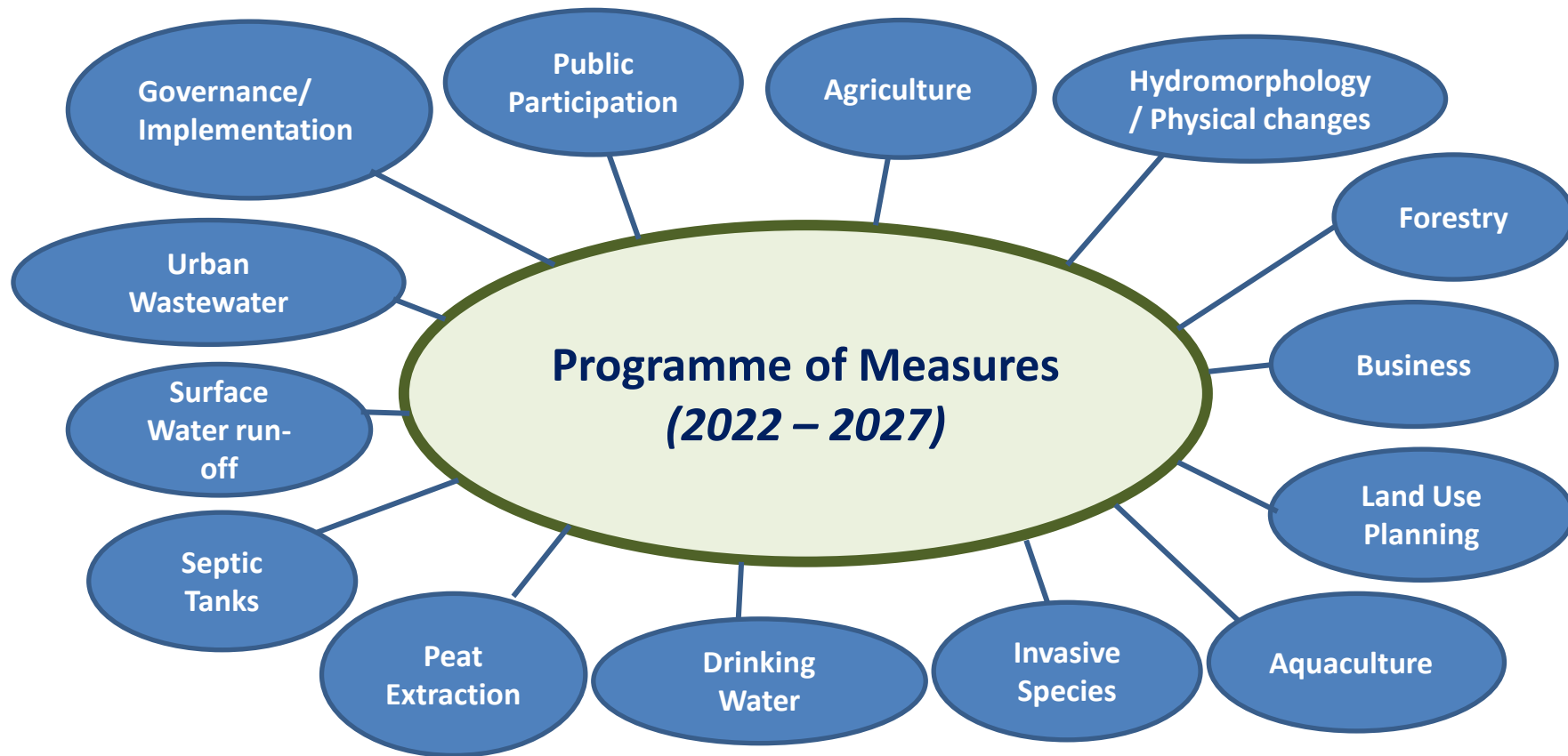
## Draft River Basin Management Plan for Ireland 2022 – 2027

Rosnastraw Stream, Kilcommon Bridge





**Appendix 2 contains 111 different measures.  
Here are some key themes:**



**The proposed measures tackle the impacts on water quality from human activities.**

**Forestry**

**Septic  
Tanks**

**Peat  
Extraction**

**Physical  
Modifications**

**Urban  
Wastewater**

**Agriculture**

**Surface water  
Run-off**



# PUBLIC PARTICIPATION

## Measures:

34	Public Participation	Evaluate the outcome of the Resilience Project for Rivers Trusts to inform future community engagement initiatives.	LAWPRO	5.3.3 Public Participation
35	Public Participation	Examine ways in which further support can be provided for the formation and capacity building of local forums to help identify and implement measures.	LAWPRO	5.3.3 Public Participation
36	Public Participation	Increase the level of funding under the Community Water Development Fund	DHLGH	5.3.3 Public Participation
37	Public Participation	Explore opportunities for the development of a national citizen science programme.	DHLGH	5.3.3 Public Participation

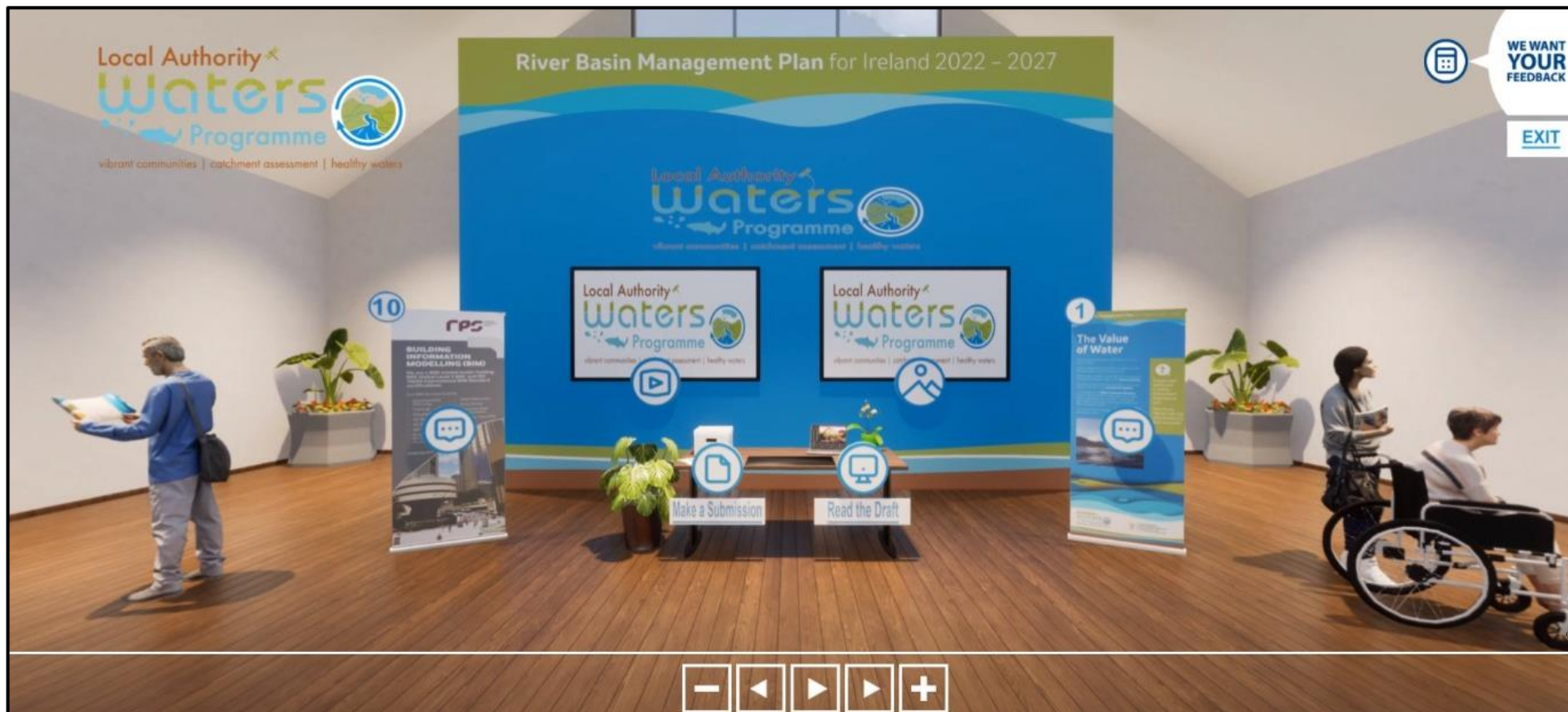
66	Urban Runoff Pressures	Develop recommendations for an implementation strategy for nature based Sustainable Urban Drainage Systems on a national scale.	DHLGH	5.4.5 Urban Runoff Pressures
----	------------------------	---------------------------------------------------------------------------------------------------------------------------------	-------	------------------------------

# Virtual Consultation Room



WE WANT  
YOUR  
FEEDBACK

EXIT



[www.lawaters.ie](http://www.lawaters.ie)



# Your views matter: Make a submission

1. Visit the Virtual Consultation Room at [www.lawaters.ie](http://www.lawaters.ie)
2. You can also send comments by email to [info@lawaters.ie](mailto:info@lawaters.ie)
3. QR code link <https://tinyurl.com/rbmp2027>
4. Post to:

Local Authority Waters Programme  
Ballingarrane,  
Clonmel. Co. Tipperary  
E91 X370



ame

Email

Phone

☐ Please tick if you want us to keep you informed of water matters. Change your preferences at any time at <https://lawaters.ie/privacy-policy/>

County

Gender Male ☐ Female ☐ Other ☐ Prefer not to say ☐

Age Range:  Under 18  18 - 24  25 - 34  35 - 44  45 - 54  55 - 64  65 - 74  Above 74

*County, Gender and Age-related data will help inform local and national government to make policy decisions and to plan for everyone's future in Ireland.*

Which of these statements best describes you? (Tick as relevant)

- ☐ Member of a community group interested in water
- ☐ Member of a water catchment or River Trust group
- ☐ Member of a Group Water Scheme
- ☐ My job depends on good water quality (Tick as relevant) Agriculture Tourism Manufacturing Other
- ☐ Environmental professional
- ☐ Employed in a Government Agency/Organisation
- ☐ Student
- ☐ None of the above Details: \_\_\_\_\_

How did you hear about this public consultation? (Please Tick appropriate answer)

- ☐ Newspaper
- ☐ Radio
- ☐ Email from the Local Authority Waters Programme
- ☐ Social Media Facebook ☐ Twitter ☐ [Instagram](#) ☐
- ☐ Poster
- ☐ LAWPRO Public Meeting (Which one?) \_\_\_\_\_
- ☐ From a family member or friend
- ☐ Informed by my local Community Group e.g. Tidy Towns, Residents Association, etc
- ☐ PPN ☐ Local Authority ☐ Local Council ☐

**All personal information is treated confidentially. The information provided here will help the Local Authority Waters Programme support local communities and plan for future consultations.**

# Can you make a submission?





Thank you for  
your attention